

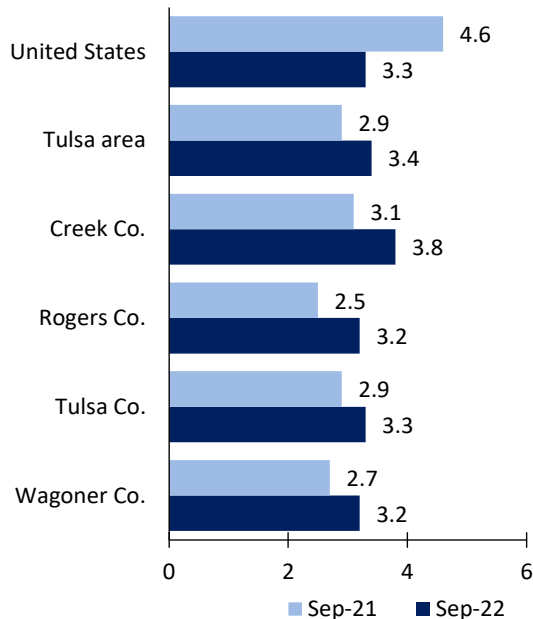
# Tulsa Area Economic Summary

Updated November 02, 2022

This summary presents a sampling of economic information for the area; supplemental data are provided for regions and the nation. Subjects include **unemployment, employment, wages, prices, spending, and benefits**. All data are not seasonally adjusted and some may be subject to revision. Area definitions may differ by subject. For more area summaries and geographic definitions, see [www.bls.gov/regions/economic-summaries.htm](http://www.bls.gov/regions/economic-summaries.htm).

## Unemployment rates for the nation and selected areas

### Unemployment rates

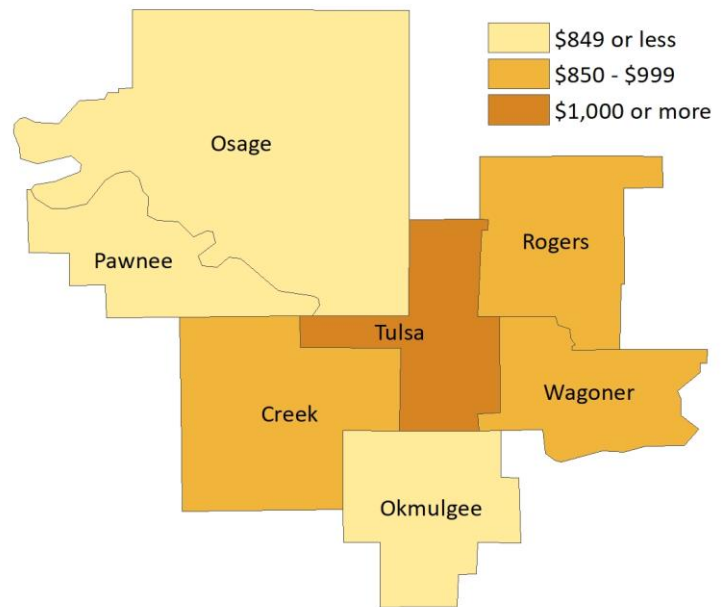


Source: U.S. BLS, Local Area Unemployment Statistics.

## Average weekly wages for all industries by county

Tulsa area, first quarter 2022

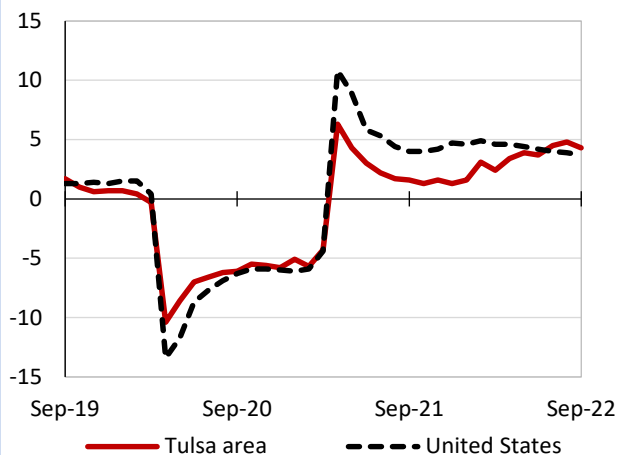
(U.S. = \$1,374; Area = \$1,071)



Source: U.S. BLS, Quarterly Census of Employment and Wages.

## Over-the-year changes in employment on nonfarm payrolls and employment by major industry sector

### 12-month percent changes in employment



Source: U.S. BLS, Current Employment Statistics.

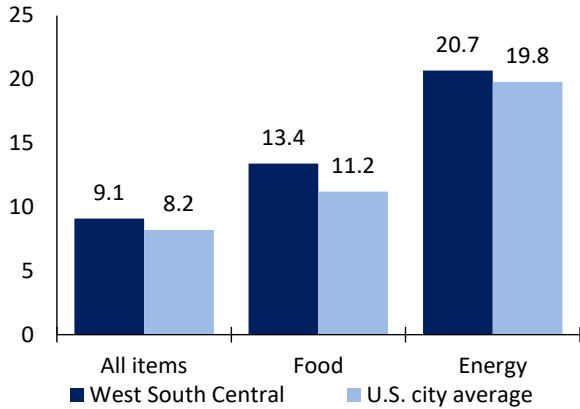
Tulsa area employment (number in thousands)	Sep. 2022	Change from Sep. 2021 to Sep. 2022	
		Number	Percent
Total nonfarm	461.9	19.1	4.3
Mining and logging	5.3	0.5	10.4
Construction	27.0	2.7	11.1
Manufacturing	48.6	1.8	3.8
Trade, transportation, and utilities	90.1	4.2	4.9
Information	5.6	-0.1	-1.8
Financial activities	23.8	1.3	5.8
Professional and business services	63.5	2.7	4.4
Education and health services	73.8	2.7	3.8
Leisure and hospitality	46.9	2.8	6.3
Other services	19.0	-0.1	-0.5
Government	58.3	0.6	1.0

Source: U.S. BLS, Current Employment Statistics.



Over-the-year change in the prices paid by urban consumers for selected categories

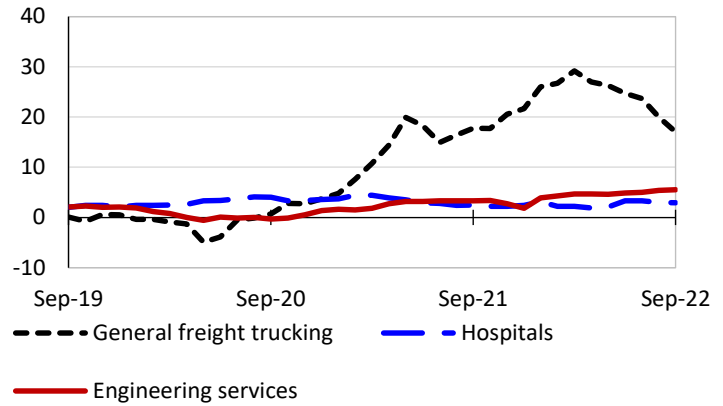
12-month percent change in CPI-U, September 2022



Source: U.S. BLS, Consumer Price Index.

Over-the-year changes in the selling prices received by producers for selected industries nationwide

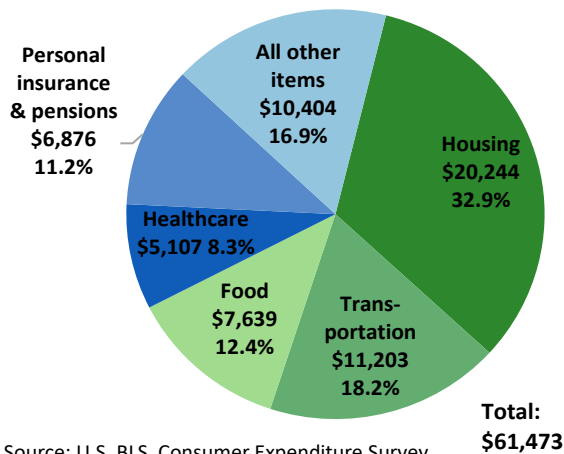
12-month percent changes in PPI



Source: U.S. BLS, Producer Price Index.

Average annual spending and percent distribution for selected categories

South average annual expenditures, 2021



Source: U.S. BLS, Consumer Expenditure Survey.

Average hourly wages for selected occupations

Occupation	Tulsa area	United States
All occupations	\$24.44	\$28.01
Human resources managers	57.15	65.67
Accountants and auditors	39.45	40.37
Registered nurses	32.75	39.78
Construction laborers	17.70	21.22
Retail salespersons	14.22	15.35
Cooks, fast food	11.50	12.25

Source: U.S. BLS, Occupational Employment and Wage Statistics, May 2021.

Employer costs per hour worked for wages and selected employee benefits by geographic division

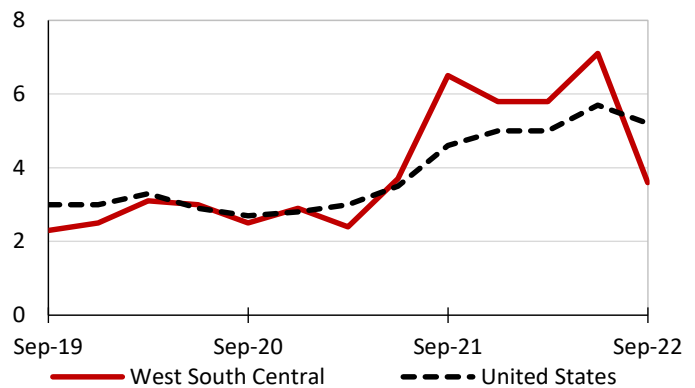
Private industry, June 2022	West South Central (1)	United States
Total compensation	\$34.96	\$38.91
Wages and salaries	25.53	27.44
Total benefits	9.43	11.47
Paid leave	2.41	2.87
Vacation	1.23	1.47
Supplemental pay	1.32	1.37
Insurance	2.19	2.96
Retirement and savings	1.02	1.33
Legally required benefits	2.49	2.93

(1) The states that compose the West South Central census division are: AR, LA, OK, and TX.

Source: U.S. BLS, Employer Costs for Employee Compensation.

Over-the-year changes in wages and salaries

12-month percent changes in ECI



Source: U.S. BLS, Employment Cost Index.