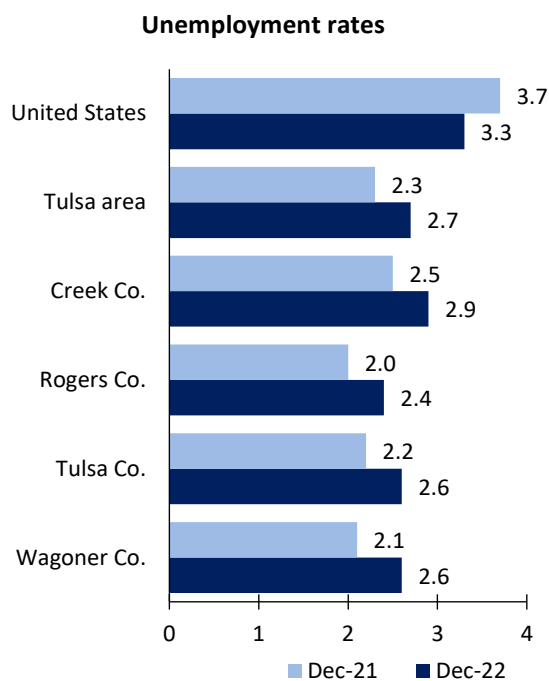


Tulsa Area Economic Summary

Updated February 03, 2023

This summary presents a sampling of economic information for the area; supplemental data are provided for regions and the nation. Subjects include **unemployment, employment, wages, prices, spending, and benefits**. All data are not seasonally adjusted and some may be subject to revision. Area definitions may differ by subject. For more area summaries and geographic definitions, see www.bls.gov/regions/economic-summaries.htm.

Unemployment rates for the nation and selected areas

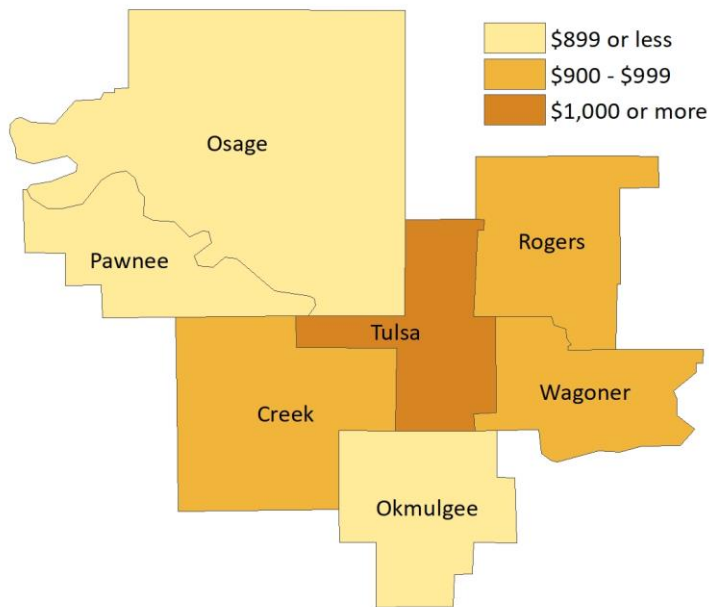


Source: U.S. BLS, Local Area Unemployment Statistics.

Average weekly wages for all industries by county

Tulsa area, second quarter 2022

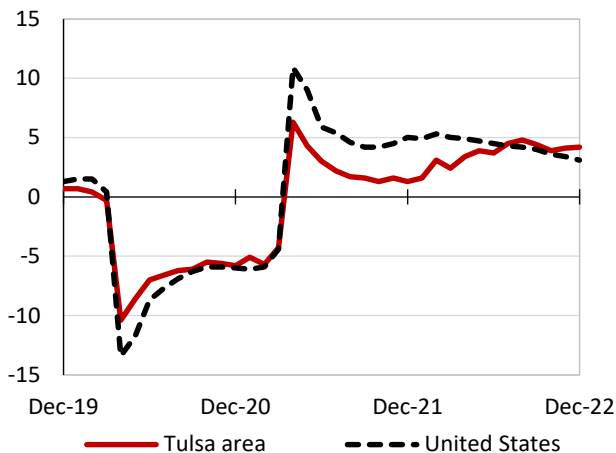
(U.S. = \$1,294; Area = \$1,058)



Source: U.S. BLS, Quarterly Census of Employment and Wages.

Over-the-year changes in employment on nonfarm payrolls and employment by major industry sector

12-month percent changes in employment



Source: U.S. BLS, Current Employment Statistics.

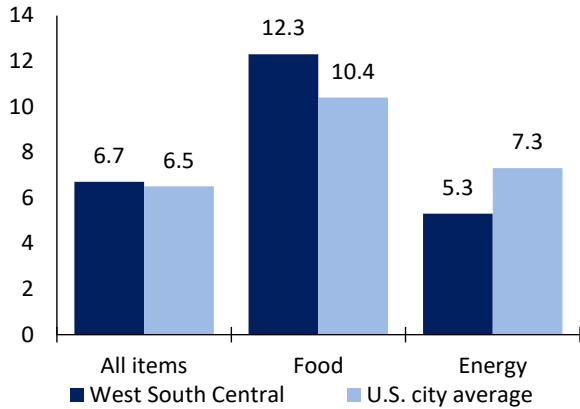
| Tulsa area employment (number in thousands) | Dec. 2022 | Change from Dec. 2021 to Dec. 2022 | |
|---|-----------|------------------------------------|---------|
| | | Number | Percent |
| Total nonfarm | 466.9 | 18.9 | 4.2 |
| Mining and logging | 5.4 | 0.5 | 10.2 |
| Construction | 26.3 | 1.7 | 6.9 |
| Manufacturing | 49.5 | 2.7 | 5.8 |
| Trade, transportation, and utilities | 93.9 | 3.8 | 4.2 |
| Information | 5.8 | 0.0 | 0.0 |
| Financial activities | 23.9 | 0.9 | 3.9 |
| Professional and business services | 62.1 | 1.0 | 1.6 |
| Education and health services | 74.9 | 4.0 | 5.6 |
| Leisure and hospitality | 47.5 | 1.8 | 3.9 |
| Other services | 19.5 | 0.4 | 2.1 |
| Government | 58.1 | 2.1 | 3.8 |

Source: U.S. BLS, Current Employment Statistics.



Over-the-year change in the prices paid by urban consumers for selected categories

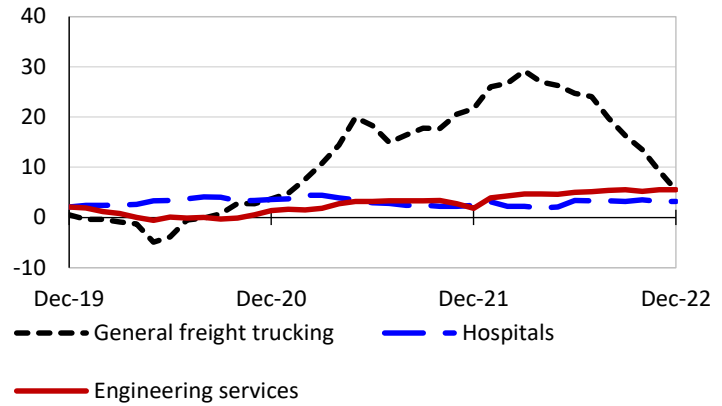
12-month percent change in CPI-U, December 2022



Source: U.S. BLS, Consumer Price Index.

Over-the-year changes in the selling prices received by producers for selected industries nationwide

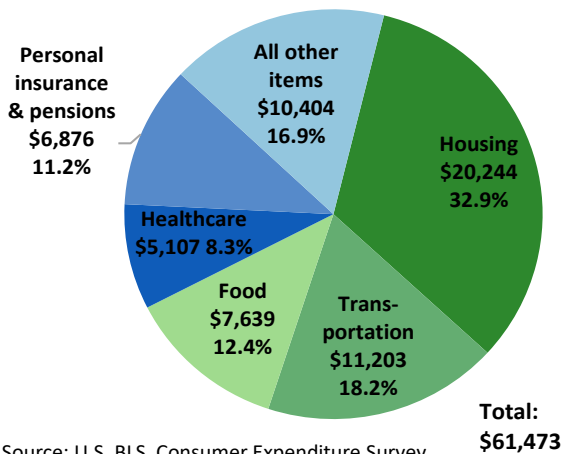
12-month percent changes in PPI



Source: U.S. BLS, Producer Price Index.

Average annual spending and percent distribution for selected categories

South average annual expenditures, 2021



Source: U.S. BLS, Consumer Expenditure Survey.

Average hourly wages for selected occupations

| Occupation | Tulsa area | United States |
|--------------------------|------------|---------------|
| All occupations | \$24.44 | \$28.01 |
| Human resources managers | 57.15 | 65.67 |
| Accountants and auditors | 39.45 | 40.37 |
| Registered nurses | 32.75 | 39.78 |
| Construction laborers | 17.70 | 21.22 |
| Retail salespersons | 14.22 | 15.35 |
| Cooks, fast food | 11.50 | 12.25 |

Source: U.S. BLS, Occupational Employment and Wage Statistics, May 2021.

Employer costs per hour worked for wages and selected employee benefits by geographic division

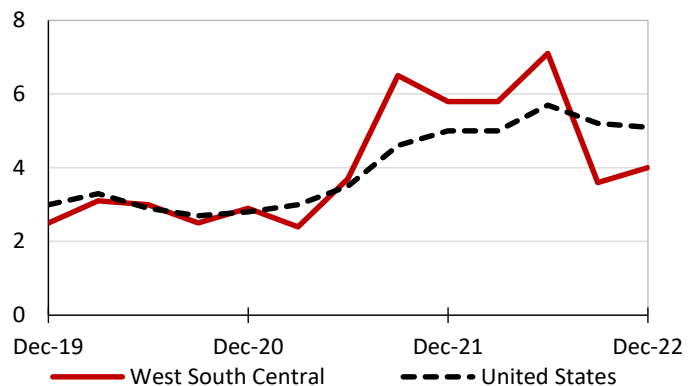
| Private industry, September 2022 | West South Central (1) | United States |
|----------------------------------|------------------------|---------------|
| Total compensation | \$35.15 | \$39.61 |
| Wages and salaries | 25.61 | 27.93 |
| Total benefits | 9.54 | 11.68 |
| Paid leave | 2.45 | 2.94 |
| Vacation | 1.25 | 1.51 |
| Supplemental pay | 1.37 | 1.41 |
| Insurance | 2.22 | 3.00 |
| Retirement and savings | 0.99 | 1.35 |
| Legally required benefits | 2.52 | 2.98 |

(1) The states that compose the West South Central census division are: AR, LA, OK, and TX.

Source: U.S. BLS, Employer Costs for Employee Compensation.

Over-the-year changes in wages and salaries

12-month percent changes in ECI



Source: U.S. BLS, Employment Cost Index.

